



Cerf Island Resort Fact Sheet



The Resort

Situated at the entrance of the Sainte Anne Marine National Park, Cerf Island Resort offers 12 private and luxurious Villas, within a naturally elegant 5 star Resort. The resort boasts a fine dining restaurant, infinity pool, pool bar and beach side dining, secluded full service beach, relaxing lounge, and private mini spa.

General information about Cerf Island and The Marine National Park

Cerf Island measures more than 1.5 km long (about 1 mile) and almost 1 km wide (almost $\frac{3}{4}$ of a mile), it reaches a height of 108 m (354 feet) and lies 3 km east of Mahé. Cerf Island was named after the French frigate "Le Cerf" which arrived at Port Victoria on 1 November 1756. Due to Cerf Island's location, in a National Marine Park, the waters around Cerf Island prove a spectacular sight. The deepest point of the Marine Park is 25 meters (75 Feet) and the Park offers exceptional marine life, with more than 150 species of reef fish, crabs, sea urchins, starfish, octopus and many more. Cerf Island is the only island in the marine park to have a small local population who commute to Mahé for their daily business. They live on the opposite side of the island.

Accommodation

Named in Creole after local trees and fish, Cerf Island Resort offers 12 intimate and luxurious Villas

- **4 Hillside Villas** (58 sq. meters plus 22 sq. metres balcony)
- **3 Hideaway Villas** (58 sq. metres, 22 sq. metres balcony plus 20 sq. metres of private sun garden)
- **5 Tortoise Suites** (68 sq. meters plus 28 sq. meters balcony)

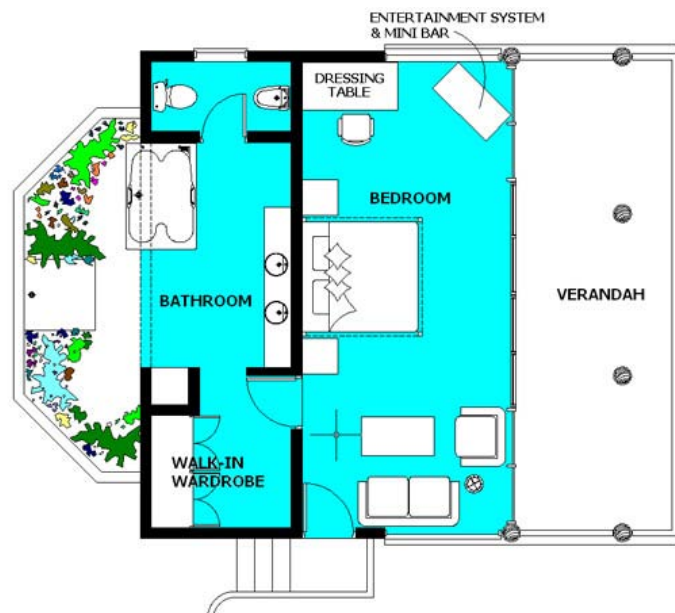
All the Villas offer beautiful views of the tropical vegetation and patches of the Indian Ocean. All allow for fantastic sunsets.

Hillside Villas



Names: Kakatwa, Bourzwa, Espadron, Vyey Babonn
 Style: Timber/stone building, with thatched roof, wooden walls
 Balcony: Wooden deck with wooden furniture
 Interior: Predominantly oiled/satin hardwood and rattan furniture, mainly made in Seychelles.

- Master bedroom and balcony
- A spacious half open air bathroom with large double bath, open plan outdoor shower, indoor toilet with bidet, two glass hand wash basins, shaving mirror and socket
- In-room seating arrangement with sofa, sofa chair and lounge table
- Walk in wardrobe
- Dining table and chairs on the balcony for in-room dining
- Rattan sun beds with cushions and table on the balcony
- Vanity table with portable hairdryer
- Integrated Air Conditioning unit with wall mounted control panel
- Ceiling fan in master bedroom
- Tea and coffee making facilities
- Mini-Bar
- Direct-dial telephone (cordless), additional telephone in the bathroom (on request)
- 25 Inch Satellite TV
- DVD/MP3/CD/VCD/CD-RW-Player
- Laundry Service
- 24 hour in-room dining

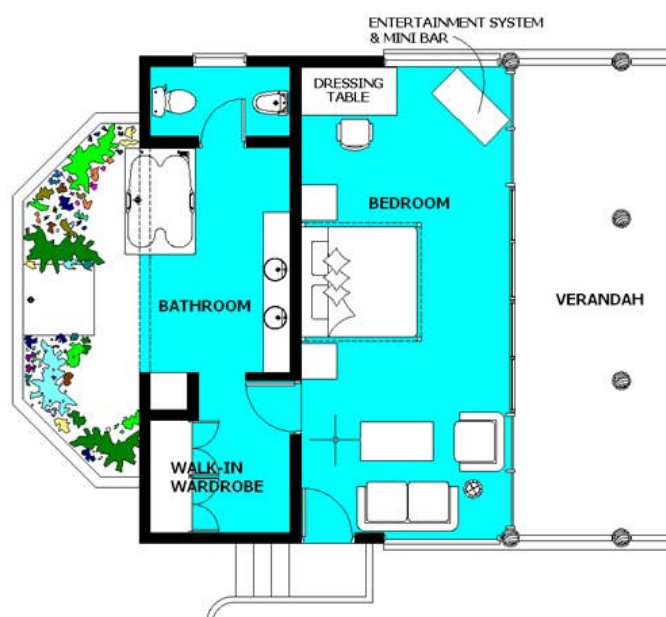


Hideaway Villas



Names: Zourit, Karkasay, Kordonnyen
 Style: Timber/stone building, with thatched roofs, wooden walls
 Balcony: Wooden deck with wooden furniture
 Interior: Predominantly oiled/satin hardwood and rattan furniture, mainly made in Seychelles.
 USP's: Direct Ocean view for Zourit and Karkasay. All have four-poster beds and private sun gardens.

- Master bedroom with Four-poster bed and balcony
- A spacious half open air bathroom with large double bath, open plan outdoor shower, indoor toilet with bidet, two glass hand wash basins, shaving mirror and socket
- In-room seating arrangement with sofa, sofa chair and lounge table
- Walk in wardrobe
- Dining table and chairs on the balcony for in-room dining
- Rattan sun beds with cushions and table on the balcony
- Vanity table with portable hairdryer
- Integrated Air Conditioning unit with wall mounted control panel
- Ceiling fan in master bedroom
- Tea and coffee making facilities
- Mini-Bar
- Direct-dial telephone (cordless), additional telephone in the bathroom (on request)
- 25 Inch Satellite TV
- DVD/MP3/CD/VCD/CD-RW-Player
- Laundry Service
- 24 hour in-room dining
- Private sun garden with sun loungers



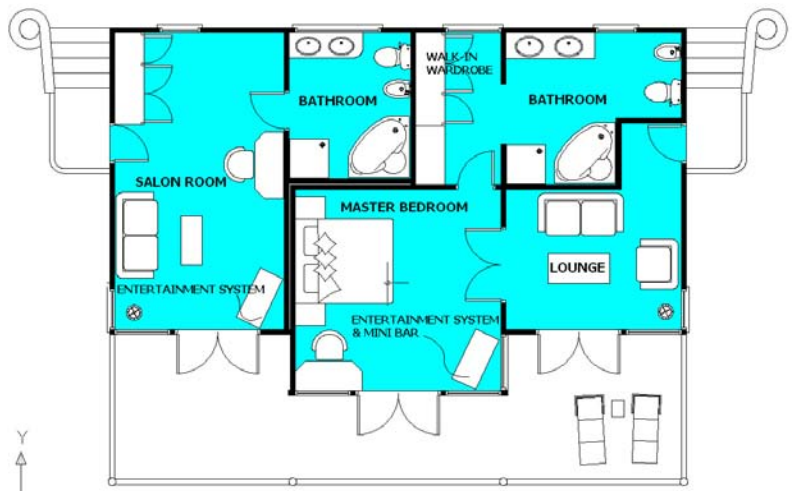
Tortoise Suites



Names:	Kalis di Pap, Takamaka, Banbou, Bwa Nwanr, Bwazozo
Style:	Timber building with thatched roofs, wooden walls and wooden ceilings
Balcony:	Wooden deck with wooden furniture
Interior:	Predominantly oiled/satin hardwood and rattan furniture, mainly made in Seychelles

Master bedroom connecting with a lounge, a separate study room with sofa bed, and balcony

- Two spacious bathrooms, one for the master bedroom and one for the study room, with two glass hand wash basins in each, corner bath and separate open plan shower, toilet, bidet, shaving mirror and socket
- Lounge with sofa, sofa chair and lounge table
- Walk in wardrobe with large fitting mirror
- Dining table and chairs on the balcony for in-room dining
- Wooden sun beds with cushions and table on the balcony
- Vanity table with portable hairdryer
- Air conditioning units with individual remote control
- Ceiling fan in master bedroom
- Tea and coffee making facilities
- Mini-Bar
- Direct-dial telephone (cordless), additional telephone in the bathroom (on request)
- 25 Inch Satellite TV
- DVD/MP3/CD/VCD/CD-RW-Player
- Laundry Service
- 24 hour in-room dining
- Separate entrances, rooms connect via the balcony



Food and Beverage

Restaurant "1756"

Our fine dining restaurant has 34 seats, and a 180 degrees ocean sea view of the entrance of the Marine Park, St Anne Island and Mahé. The restaurant offers traditional Créole and International cuisine. Open for breakfast (7.30-11.00 last order), lunch (12.30-14.30 last order) and dinner (19.00-21.30 last order).



Cocktail Bar

Situated at the entrance of the restaurant, the cocktail bar will offer selection of traditional and international cocktails, fine alcohol, and liquors. Open for and after lunch and dinner.

Private Dining

Private dining, i.e. a romantic beach dinner, can be arranged on any location on the premises. Tree top private dining is now available. A surcharge is applicable.



Pool Bar and Beachside Dining

Located adjacent to the swimming pool, the Pool Bar offers a light lunch and afternoon menu, fresh juices and drinks. Along the beach, there are seating arrangements for you to enjoy your food whilst overlooking the beach. Open daily, from 9.00 - 23.00. Our full service beach is served from the pool bar, all pool bar food and drinks are served on the beach.

In-room dining

Our 24-hour menu offers a variety of light meals around the clock. Guest can also opt to have their breakfast, lunch or dinner served in their room or set on their dining table on the – a copy of the daily menu will be presented in the room on request. A surcharge is applicable per order.

Picnic Guest can choose from two deluxe fillings for a picnic backpack - ideal for beach picnics anywhere.

Facilities

Private Mini Spa

The private Mini Spa offers massages and beauty treatments, an outdoor Jacuzzi, a steam room, open air, and outdoor lounge. The private mini spa is for exclusive use only. In-room massages are available.



Internet room

An internet room, with high speed computer, ISDN connection and printer is available.

Business facilities

Business services such as printing, typing, translations, and copying are available from Guest Relations.

In- room Entertainment

A selection of CD 's (international artists and classical) DVD's and board games are available from Guest Relations.

Activities

Available from Guest Relations:

- Snorkelling equipment
- Kayaks
- Pedal Boat
- Sea Scooters
- Private Boat Charter with experienced skipper
- Island excursions
- Picnics and Barbecues



Other activities and excursions that will be coordinated by Guest Relations:

- Excursions to outer islands
- Excursions and tours on Mahé
- Big game fishing
- Trolling fishing
- Diving (night or day)
- Snorkelling in the Marine park and around islands
- Picnics and Barbecues
- Nature trails
- Sailing



Services

- Foreign Currency Exchange
- Printing, photocopy, facsimile, e-mails, internet access
- Postcard, stamps and daily post
- Luggage room
- Car rental assistance and bookings
- Tailor-made excursions
- Transfer assistance and booking
- Organisation of Wedding, Gala dinner, Reception and special occasions
- Romantic beach dining
- Hair dressing and beauty treatments recommendations and bookings
- Off site lunch or dinner recommendations and bookings

Other general information

- Children from 7 years and above are accepted on the Resort, when travelling with parents
- No animals are accepted on the Resort
- A minimum stay of two nights is required
- The **check in time is 14:00, the check out time is 12:00** (noon)
- Late check out is accepted subject to availability. Rooms used from 12:00 to 18:00 are charged an additional 50% of the published rate, and rooms used beyond 1800 are charged at 100% of the published rate

Special features

Chef's Spice Garden

Fresh spices and herbs, vegetables and fruits from our private Chef's garden are available.



View Point/ Nature Guide

Set in natural vegetation, a pathway leads to an amazing Marine Park viewpoint. A map of all different types of trees and plants on the property will be available from Guest Relations early 2004. Indian Ocean fishes and birds cards are already available from Guest Relations, on request.

Contact Information

Name:	Cerf Island Resort	Telephone:	+ 248 294 500
Address:	PO Box 1071, Mahé, Seychelles	Fax:	+ 248 294 511
Location:	Cerf Island – Marine Park	E-mail:	info@cerf-resort.com
Transfer:	10 minutes by speed boat from Mahé, 5 minutes by helicopter from Airport	Website:	www.cerf-resort.com

Geological and Geographical information

