



## **Cerf Island Resort Fact Sheet**



### **The Resort**

Boutique hotel situated at the entrance of the Sainte Anne Marine National Park, *Cerf Island Resort* offers 12 exclusive and luxurious villas, within a naturally elegant setting. The resort boasts a fine dining restaurant with a delight of Creole and international cuisine, infinity pool, pool bar and beach side dining, secluded full service beach, relaxing lounge, and private mini spa.

### **General information about Cerf Island and the Marine National Park**

Cerf Island measures more than 1.5 km long (about 1 mile) and almost 1 km wide (almost  $\frac{3}{4}$  of a mile), it reaches a height of 108 m (354 feet) and lies 3 km east of Mahé.

Cerf Island was named after the French frigate 'Le Cerf' which arrived at Port Victoria on 1 November 1756.

Due to Cerf Island's location, in a National Marine Park, the waters around Cerf Island prove a spectacular sight. The deepest point of the Marine Park is 25 meters (75 feet) and the Park offers exceptional marine life, with more than 150 species of reef fish, crabs, sea urchins, starfish, octopus and many more.

Cerf Island is the only island in the marine park to have a small local population who commute to Mahé for their daily business. They live on the opposite side of the island.

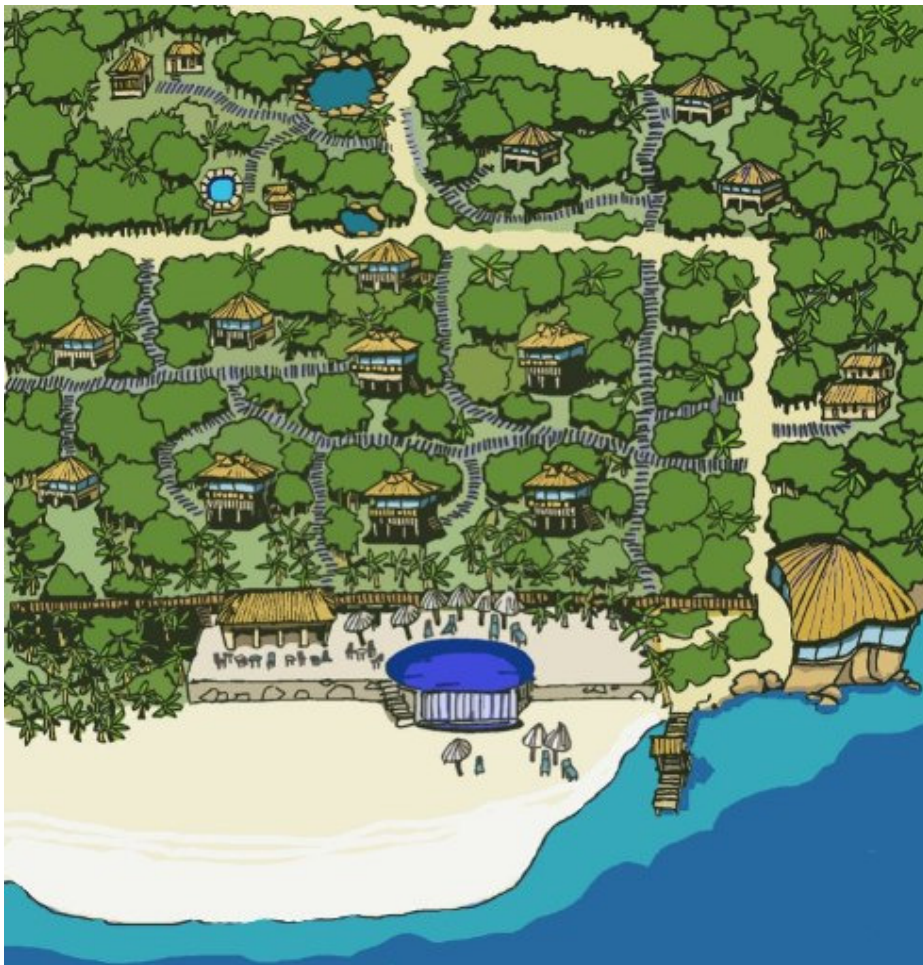
## Accommodation

Named in Creole after local trees and fishes, Cerf Island Resort offers 12 intimate and luxurious villas:

- 4 **Hillside Villas** (58 sq. meters plus 22 sq. metres balcony)
- 3 **Hideaway Villas** (58 sq. metres, 22 sq. metres balcony plus 20 sq. metres of private sun garden)
- 5 **Tortoise Suites** (68 sq. meters plus 28 sq. meters balcony)

All the Villas offer beautiful views of the tropical vegetation and patches of the Indian Ocean. All allow for fantastic sunsets.

## Resort Map

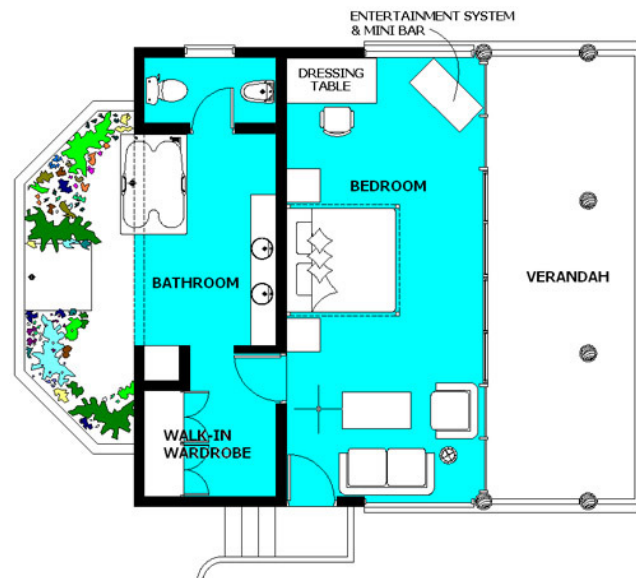


## Hillside Villas



Names: Kakatwa, Bourzwa, Espadron, Vyey Babonn  
 Style: Timber/stone building, with thatched roof, wooden walls  
 Balcony: Wooden deck with wooden furniture  
 Interior: Predominantly oiled/satin hardwood and rattan furniture, mainly made in Seychelles.

- Master bedroom with four-poster bed and balcony
- A spacious half open air bathroom with large double bath, open plan outdoor shower, indoor toilet, bidet, two glass hand wash basins, shaving mirror and socket
- In-room seating arrangement with sofa, sofa chair and lounge table
- Walk in wardrobe
- Dining table and chairs on the balcony for in-room dining
- Rattan sun beds with cushions and table on the balcony
- Vanity table with portable hairdryer
- Integrated Air Conditioning unit with wall mounted control panel
- Ceiling fan in master bedroom
- Tea and coffee making facilities
- Mini-Bar
- Direct-dial telephone (cordless), additional telephone in the bathroom (on request)
- 25 Inch Satellite TV
- DVD/MP3/CD/VCD/CD-RW-Player
- Laundry Service
- In-room dining

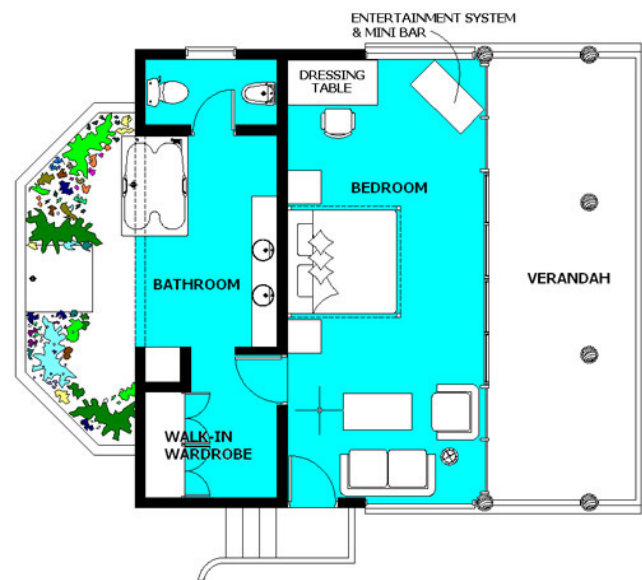


## Hideaway Villas



Names: Zourit, Karkasay, Kordonnyen  
 Style: Timber/stone building, with thatched roofs, wooden walls  
 Balcony: Wooden deck with wooden furniture  
 Interior: Predominantly oiled/satin hardwood and rattan furniture, mainly made in Seychelles.  
 USP's: Direct Ocean view for Zourit and Karkasay. All have four-poster beds and private sun gardens.

- Master bedroom with four-poster bed and balcony
- A spacious half open air bathroom with large double bath, open plan outdoor shower, indoor toilet, bidet, two glass hand wash basins, shaving mirror and socket
- In-room seating arrangement with sofa, sofa chair and lounge table
- Walk in wardrobe
- Dining table and chairs on the balcony for in-room dining
- Rattan sun beds with cushions and table on the balcony
- Vanity table with portable hairdryer
- Integrated Air Conditioning unit with wall mounted control panel
- Ceiling fan in master bedroom
- Tea and coffee making facilities
- Mini-Bar
- Direct-dial telephone (cordless), additional telephone in the bathroom (on request)
- 25 Inch Satellite TV
- DVD/MP3/CD/VCD/CD-RW-Player
- Laundry Service
- In-room dining
- Private sun garden with sun loungers

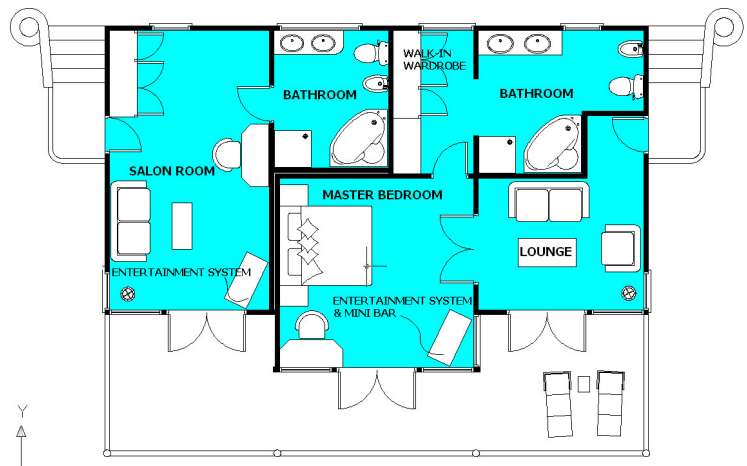


## Tortoise Suite Villas



Names: Kalis di Pap, Takamaka, Banbou, Bwa Nwanr, Bwazozo  
 Style: Timber building with thatched roofs, wooden walls and wooden ceilings  
 Balcony: Wooden deck with wooden furniture  
 Interior: Predominantly oiled/satin hardwood and rattan furniture, mainly made in Seychelles

- Master bedroom connecting with a lounge, a separate study room with sofa bed, and balcony
- Two spacious bathrooms, one for the master bedroom and one for the study room, with two glass hand wash basins in each, newly fitted spa bath and separate open plan shower, toilet, bidet, shaving mirror and socket
- Lounge with sofa, sofa chair and lounge table
- Walk in wardrobe with large fitting mirror
- Dining table and chairs on the balcony for in-room dining
- Wooden sun beds with cushions and table on the balcony
- Vanity table with portable hairdryer
- Air conditioning units with individual remote control
- Ceiling fan in master bedroom
- Tea and coffee making facilities
- Mini-Bar
- Direct-dial telephone (cordless), additional telephone in the bathroom (on request)
- 25 Inch Satellite TV
- DVD/MP3/CD/VCD/CD-RW-Player
- Laundry Service
- In-room dining
- Separate entrances, rooms connect via the balcony



## Food and Beverage



### Restaurant "1756"

Our fine dining restaurant has 34 seats, and a 180 degrees ocean sea view of the entrance of the Marine Park, St Anne Island and Mahé. The restaurant offers traditional Creole and International cuisine. Open for breakfast (07.30-11.00 last order), lunch (12.30-15.30 last order) and dinner (19.00-21.30 last order).

### Cocktail Bar

Situated at the entrance of the restaurant, the cocktail bar will offer selection of traditional and international cocktails, fine alcohol, and liquors. Open for and after lunch and dinner.

### Private Dining

Private dining, i.e. a romantic beach dinner, can be arranged on any location on the premises. Tree top private dining is now available. A surcharge is applicable.



### Pool Bar and Beachside Dining

Located adjacent to the swimming pool, the Pool Bar offers a light lunch and afternoon menu, fresh juices and drinks. Along the beach, there are seating arrangements for you to enjoy your food whilst overlooking the beach. Open daily, from 09.00 - 18.00. Our full service beach is served from the pool bar, all pool bar food and drinks are served on the beach.



### In-room dining

Our in-room dining menu offers a variety of light meals. Guests can also opt to have their breakfast, lunch or dinner served in their room or set on their dining table on the – a copy of the daily menu will be presented in the room on request. A surcharge is applicable per order.

### Picnic

Guest can choose from two deluxe fillings for a picnic backpack - ideal for beach picnics anywhere.

## Facilities

### Private Mini Spa

The private Mini Spa offers massages and beauty treatments, an outdoor Jacuzzi, a steam room, open air, and outdoor lounge. The private mini spa is for exclusive use only. In-room massages are available.

### Internet room

An internet room, with high speed computer, ISDN connection and printer is available.

### Business facilities

Business services such as printing, typing, translations, and copying are available from Guest Relations.

### In- room Entertainment

A selection of CD 's (international artists and classical) DVD's and board games are available from Guest Relations.



## Activities

Available from Guest Relations:

- Snorkelling equipment
- Kayaks
- Pedal Boat
- Private Boat Charter with experienced skipper
- Island excursions
- Picnics and Barbecues

Other activities and excursions that will be coordinated by Guest Relations:

- Excursions to outer islands
- Excursions and tours on Mahé
- Big game fishing
- Trolling fishing
- Diving (night or day)
- Snorkelling in the Marine park and around islands
- Picnics and Barbecues
- Nature trails
- Sailing



## Services

- Foreign Currency Exchange
- Printing, photocopy, facsimile, e-mails, internet access
- Postcard, stamps and daily post
- Luggage room
- Car rental assistance and bookings
- Tailor-made excursions
- Transfer assistance and booking
- Organisation of Wedding, Gala dinner, Reception and special occasions
- Romantic beach dining
- Hair dressing and beauty treatments recommendations and bookings
- Off site lunch or dinner recommendations and bookings

## Other general information

- Children from 7 years and above are accepted on the Resort, when travelling with parents
- No animals are accepted on the Resort
- No minimum stay required – except during Christmas and New Year, minimum 5 nights stay
- The **check in time is 14:00, the check out time is 12:00** (noon)
- Late check out is accepted subject to availability. Rooms used from 12:00 to 18:00 are charged an additional 50% of the published rate, and rooms used beyond 18:00 are charged at 100% of the published rate

## Special features

### Chef's Spice Garden

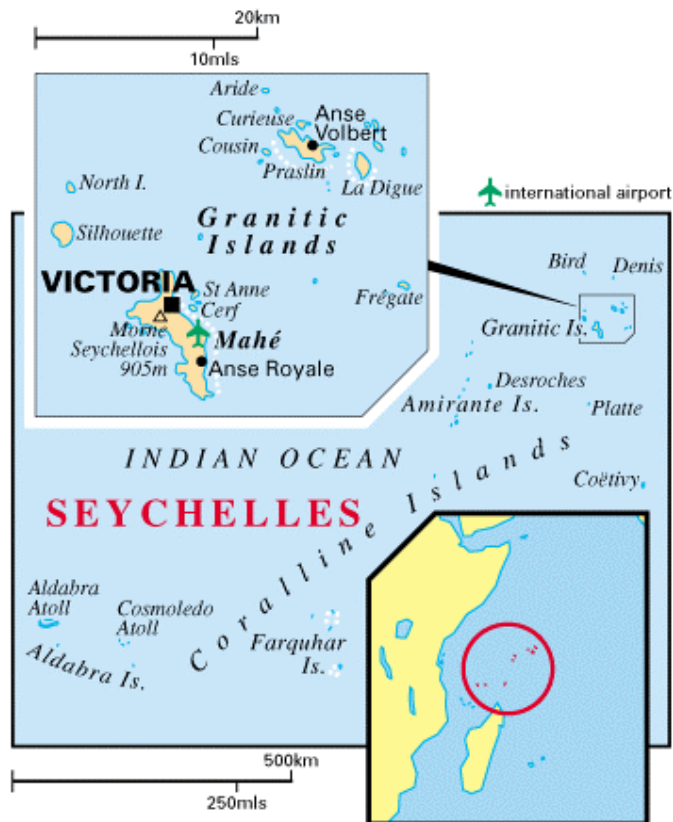
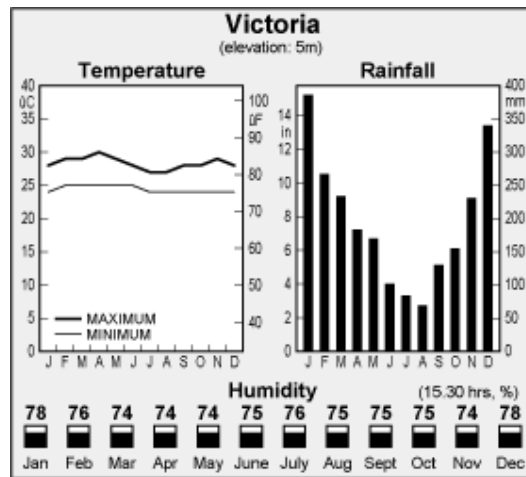
Fresh spices and herbs, vegetables and fruits from our private Chef's garden are available.

### View Point/ Nature Guide

Set in natural vegetation, a pathway leads to an amazing Marine Park viewpoint and Cerf Island Resort private helipad.



## Geological and Geographical information



**Name:** Cerf Island Resort  
**Address:** PO Box 1071, Mahé, Seychelles  
**Location:** Cerf Island – Marine Park  
**Transfer:** 10 minutes by speed boat from Mahé  
 5 minutes by helicopter from Airport

**Telephone:** + 248 294 500  
**Fax:** + 248 294 511  
**E-mail:** info@cerf-resort.com  
**Website:** www.cerf-resort.com